

DENAS-VERTEBRA

**EMPHASIS
ON EACH VERTEBRA**



Domestic
Effective
Necessary
Support



FROM THE AUTHORS

There are people who know how to make good medical devices, there are treatments that cannot leave anyone indifferent, there are parts of the body that are in need of treatment most - there is a line of people, wishing to pass through preventative or medical course with the help of the device DENAS-Vertebra!

AUTHORS:

Safronov A.A.
Nikolaeva N.B.
Ovsyannikov S.A.

EDITORIAL**BOARD:**

Vlasov A.A.

DESIGN:

Umnikova M.V.

PHOTO:

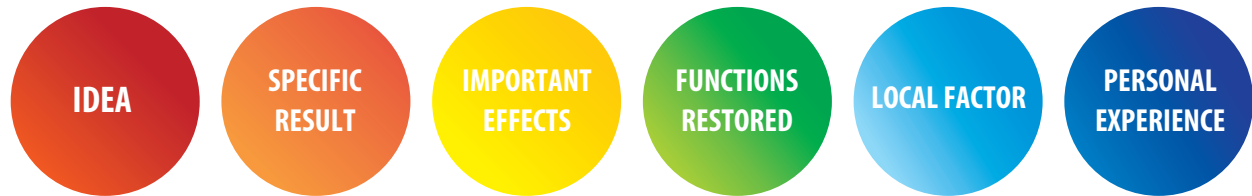
Grub Julia

PROOFREADER:

Smirnov Maksim
Vasiliev Alexey

Sushkova L.I.

Public library of the medical center of the
corporation «DENAS MS»



WHO IS RESPONSIBLE FOR WHAT

The necessity of application of impact at various departments of the back appears not only under backache. At the whole length of spinal cord and nerves, extending from it, control operation of internal organs and body parts. It turns out that under treatment of many (if not most) diseases and ambulatory ailments it is appropriate to impact at one or another section of the spinal column and paravertebral areas. Moreover, for the purpose of achieve-

ment of general regulatory effect, it is recommended to impact whole length of the spine - from second cervical vertebra to coccyx. Thus, clinical tests on research of DENS efficiency have confirmed not only pronounced analgesic effect under pathology of the spine, but also improvement of regional blood circulation and normalization of organ functions under wide range of diseases of internal organs.

There are contraindications for use. For proper conduction of procedures with the help of device DENAS-Vertebra, and for determination of optimal combination with other methods of treatment, it is required to be acquainted with operations manual or consult with a specialist.





EVERY BODY ORGAN IS UNDER CONTROL

In the DENS-therapy there is universal recipe for conduction of procedure.

1. Zone of diseased organ or body part projection is processed (so-called direct projection of complaint).
2. Zone of segment is processed- a certain area of the back, located at the level of complaint.

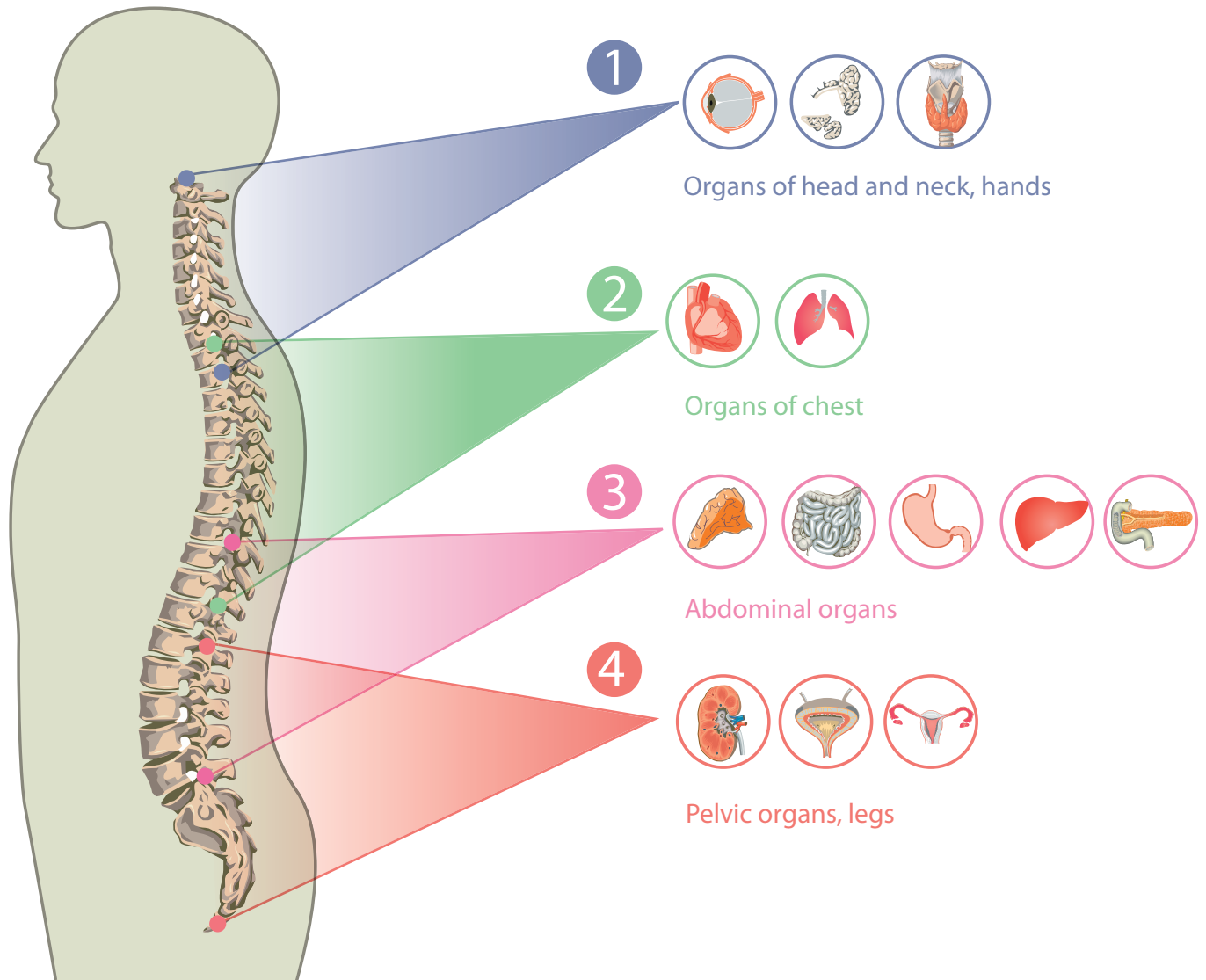
Under application of universal portable devices of DENS-therapy, you should select zone, mode and frequency of impact. Under application of device DENAS-Vertebra you must choose program of impact, after that stimulation parameters will be set automatically

CERVICALIS REGION: head and neck organs (blood vessels, nerves, upper respiratory tract, dental system, thyroid gland), upper limbs (vessels, joints, nerves).

THORAX REGION: chest organs (heart and blood vessels, lymph nodes, bronchopulmonary system, stomach, liver, pancreas), upper limbs (vessels, joints, nerves).

LUMBOSACRAL-COCYGEUS REGION: lower limbs (blood vessels, joints, nerves), intestine, male and female health, urinary system.

There are contraindications for use. For proper conduction of procedures with the help of device DENAS-Vertebra, and for determination of optimal combination with other methods of treatment, it is required to be acquainted with operations manual or consult with a specialist.



DENAS-VERTEBRA: IDEA

After choosing a neck and back as target organ for DENAS-therapy, we have at once identified several areas of application of new product DENAS-Vertebra, distributing them with the help of four programs.

Forty-eight electrodes of the device operate in a strict sequence, with a certain speed and frequency of stimulation. Subjectively during the procedure a person feels comfortable, thanks to the effect of "traveling wave". This "wave" models labile way of movement of devices DENAS in portable versions and actually reminds of massage. But in this case we refer to electroimpulsemassage.

Please do not confuse electric impulse impact with vibration impact. The absence of any vibration impact in the device DENAS-Vertebra expands indications for its use under acute pain and trauma, under osteoporosis and intervertebral disks hernia.

Creation of complex modulations of impulse current has allowed to implement in the device DENAS-Vertebra various massage effects: stroking, kneading and effleurage.

There are contraindications for use. For proper conduction of procedures with the help of device DENAS-Vertebra, and for determination of optimal combination with other methods of treatment, it is required to be acquainted with operations manual or consult with a specialist.



PROGRAM A.

GENERAL EFFECT – SPECIFIC RESULT

During the procedure, impact is applied at the whole length of back along the spinal column. Emphasis on each vertebra is possible through several phases of the program. Active switching of the electrodes from top downward, first at back median line of the body, followed by paravertebral areas, by cervical, thoracic and lumbosacral segments gives intense general effect. When it is necessary to "collect" the body into a whole, to recover quickly from illness or improve working capacity, it is necessary to conduct 1-3 procedures with program A.

AREAS OF APPLICATION:

- unlocalized (general) complaints (situational application);
- rehabilitation after injuries, illnesses (course - 8-10 procedures);
- additional preventive treatment of chronic diseases (course - 8-10 procedures);
- preventive treatment and treatment of stress (course - 8-10 procedures);
- increase of general body resistance (1-3 daily procedures).

There are contraindications for use. For proper conduction of procedures with the help of device DENAS-Vertebra, and for determination of optimal combination with other methods of treatment, it is required to be acquainted with operations manual or consult with a specialist.



SESSION AT DENAS-VERTEBRA



1. Read the instructions and if there are indications and there are no contraindications, conduct the session. Place the device on couch, use individual towel

2. Between electrodes of the device and patient's body shall be no clothes.

3. Take a comfortable position, so that top electrodes will be at cervical spine (under hindhead)

There are contraindications for use. For proper conduction of procedures with the help of device DENAS-Vertebra, and for determination of optimal combination with other methods of treatment, it is required to be acquainted with the operation instructions or consult with a specialist.



4. If necessary, place a towel under hindhead, it shall be rolled up several times, or a small pillow. You can bend your knees.



5. Turn on the device and set the program. Wait until the end of program.

6. Stand up carefully, without sudden movements. Dress up and sit in the chair for 10-15 minutes.

There are contraindications for use. For proper conduction of procedures with the help of device DENAS-Vertebra, and for determination of optimal combination with other methods of treatment, it is required to be acquainted with operations manual or consult with a specialist.

PROGRAM B. SUCH SIGNIFICANT EFFECTS

B During the procedure, impact is applied to selected area of a back (cervical, thoracic or lumbosacral region). Many diseases and ailments can cause backache; it often has a multifactorial nature. Under diseases of neck (cervical spine instability) mechanical effect is not acceptable, then DENS-therapy shall be preferred. When it is necessary to "work out" specific region of a back, then program B is at your service, corrective action of which is designed to achieve quick results here and now.

AREAS OF APPLICATION:

- pronounced pain in the back, connected
- with diseases or spinal column injuries and
- back muscles (course - 10-14 procedures);
- spastic pain under diseases of internal
- organs (course - 8-10 procedures);
- rehabilitation in postoperative period
- (course - 8-10 procedures)
- physical stress (situational application in first hours after load).

There are contraindications for use. For proper conduction of procedures with the help of device DENAS-Vertebra, and for determination of optimal combination with other methods of treatment, it is required to be acquainted with operations manual or consult with a specialist.

*... Weakness in the knees and avulsion of feet
occur through spine. You should have come
sooner. Actually, you shall have come long ago ...*

Marty Larni «Fourth vertebra»



PROGRAM C.

FUNCTIONS RESTORED

During the procedure impact is applied to one selected area of a back (cervical, thoracic or lumbosacral region). In contrast to program B, stimulation with higher contrast is applied, which secures improvement of metabolic and trophic processes in all tissues and shall be preferred under treatment of functional disorders of musculoskeletal system and regulation of functions of internal organs (muscle strain, digestive dyskinesia, bronchopulmonary diseases, etc.) If in the first place you want to achieve regulatory effect, beginning with normalization of muscle tonus and ending with function of separate body organ, you shall use program C.

There are contraindications for use. For proper conduction of procedures with the help of device DENAS-Vertebra, and for determination of optimal combination with other methods of treatment, it is required to be acquainted with operations manual or consult with a specialist.

AREAS OF APPLICATION:

- backache, associated with spinal chronic diseases (course— 8-10 procedures);
- overexertion of back muscles (fatigue, «blocking» of muscles, etc.), situational application;
- exacerbation of chronic diseases of internal organs (course— 5-10 procedures);
- at all stages of rehabilitation, secondary prevention (situational use).

*Healing – is a matter
of time, but sometimes
it is also a matter of
opportunity.*

Hippocrates



PROGRAM D.

LOCAL FACTOR

During the procedure, impact is applied locally to zones with small area. In the practice of conduction of sessions DENS remote electrodes-applicators have been included, which have helped to reduce labor costs and treatment time. In fact, program D operates in mode "DENS-applicator." Program D is the shortest by duration and is usually combined with other programs, if it is necessary to achieve rapid pain relief. For example, program D (projection of pain), then program B or C; segment at the level of pain syndrome.

AREAS OF APPLICATION:

- emergency care under acute backache, associated with lesions of spine;
- treatment of trigger zones;
- therapy «on demand» under acute vertebral pain syndrome;
- increase of effectiveness of other programs.

There are contraindications for use. For proper conduction of procedures with the help of device DENAS-Vertebra, and for determination of optimal combination with other methods of treatment, it is required to be acquainted with operations manual or consult with a specialist.



IT IS NECESSARY TO KNOW

In clinical practice, there are a number of diseases and disease states, restricting application of DENS-therapy devices.

ABSOLUTE CONTRAINDICATIONS:

- individual intolerance to electric current,
- presence of an implanted pacemaker.

RELATIVE CONTRAINDICATIONS:

- status epilepticus,
- neoplasms,
- acute fevers of unknown etiology,
- vein thrombosis,
- acute mental, alcohol or drug excitation status.

If you have any of mentioned above contraindications, before application of the device you shall always consult with your doctor or read instruction manual.

*If a person keeps track of his health, it is
difficult to find a doctor who would know
something more helpful to his health than
the person himself would.*

Socrates



FROM PERSONAL EXPERIENCE

Each device, produced by the corporation, must pass certain stages of approvals, testing and research. One such study was conducted on the basis of DENAS-clinic. As part of the validation therapeutic and preventive courses of neurostimulation have been performed. The staff of the medical center corporation has received with the help of the device

DENAS-Vertebra rehabilitation of the back, programs of the device have been successfully debugged, and then staff of other departments has tested the device. In total 350 procedures have been conducted (each participant of testing has received a course of 7-10 sessions). No side effects have been reported, there have not been cases of refusal.

There are contraindications for use. For proper conduction of procedures with the help of device DENAS-Vertebra, and for determination of optimal combination with other methods of treatment, it is required to be acquainted with operations manual or consult with a specialist.

Improvement of sleep – 50%

**Normalization of blood pressure
during session – 36%**

Reduction and relief of backache – 98%

**Reduction and relief of pain in the neck –
for all persons, who have complained about it**

**Reduction and relief of headaches – 42%
of all persons, who have complained about it**

Wage increases - data is not available

**Improvement of health in general,
mood and work capacity – 100%**





www.denascorp.ru